



BEACON FEN ENERGY PARK

Planning Inspectorate Reference: EN010151

Figure 6.32 Vegetation Removal Plan
Document Reference: 6.4 ES Volume 3, 6.4.43 b
October 2025



Quality information

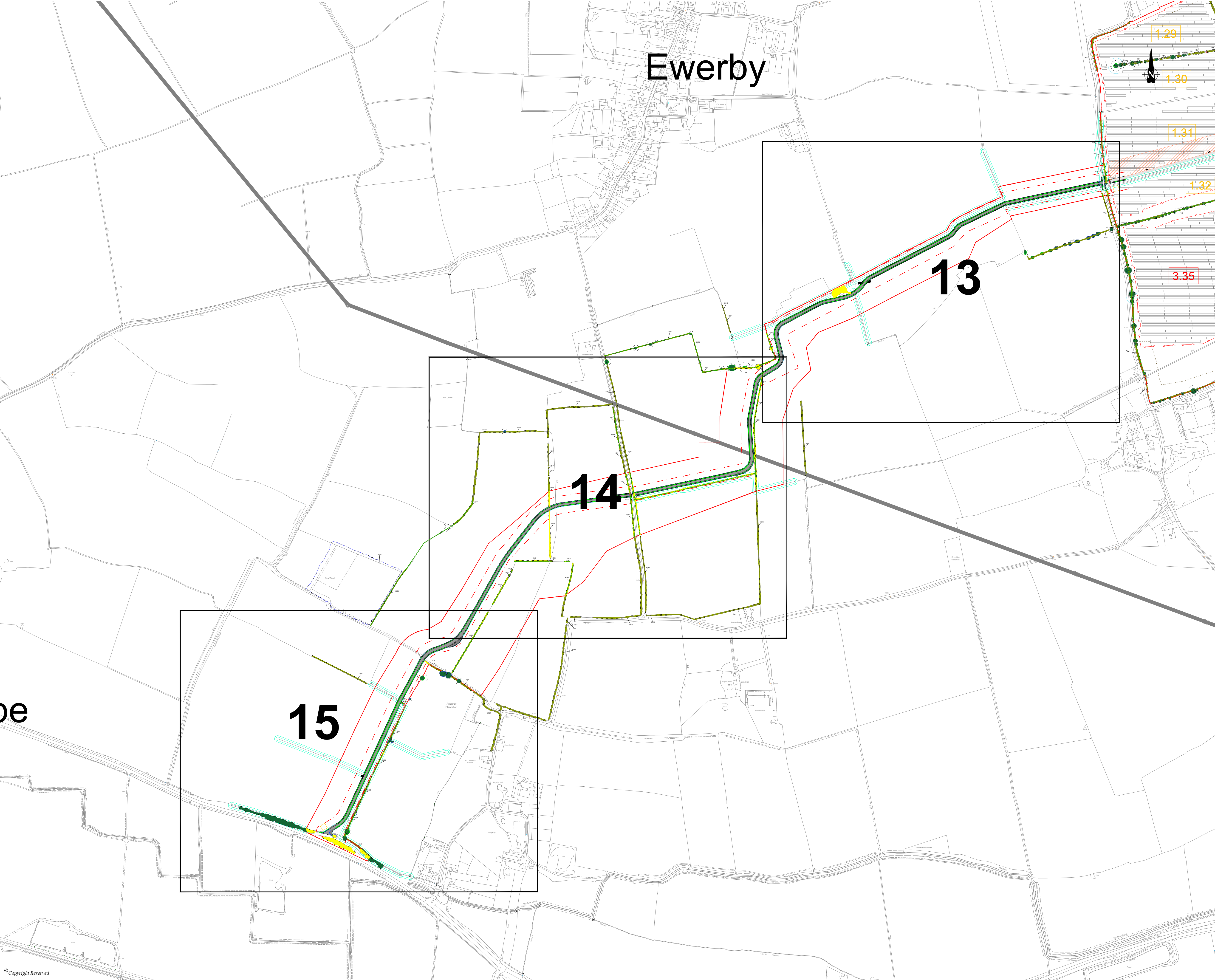
Prepared by	Checked by	Verified by	Approved by
SC	DS	LG	SR

Revision History

Revision	Revision date	Details	Authorized	Name	Position
1	16/10/25	Amendment to change vegetation previously shown as lost to retained.	DS	DS	AD

Disclaimer

This report has been prepared by SLR Consulting with all reasonable skill, care and diligence, within the terms of the Contract with the Client. The report is confidential to the Client and SLR Consulting accepts no responsibility of whatever nature to third parties to whom this report may be made known. No part of this document may be reproduced without the prior written approval of SLR Consulting.



Ewerby

13

14

15

DO NOT SCALE FROM THIS DRAWING

- KEY
- DCO Order Limits
 - Existing Trees / Vegetation
 - Existing Hedgerows to be retained and enhanced
 - Important Hedgerow
 - Existing Ponds / Waterbodies
 - Proposed Fence
 - Proposed Access Track
 - Root Protection Area
 - Existing Vegetation to be potentially removed
 - Existing Hedgerow to be removed (Energy Park)
 - Existing Scrub to be removed (Energy Park)
 - Existing Woodland to be removed (Energy Park)
 - Existing Tree Group to be removed (Energy Park)

Notes:
Vegetation removal within Bespoke Access Route and Cable Route Corridor shown on this plan is based on the current scheme design and alignment. Final details to be confirmed at detailed design stage.

Excluding the DCO order limits, boundaries shown are inticative.

DCO order limits provided by Ardent Management on 04/02/2025.

Layout of Solar Panels taken from skyray drawing LCA-2023-01-BeaconFen_Works Plan B Rev B dated 25/02/25.

© Crown Copyright and database rights 2025 Ordnance Survey AC0000808122

3	QA Checks	16/10/25	SC	DS	DS
2	RETAINED VEGETATION AMENDMENT	07/10/25	SC	DS	DS
P1	FIRST ISSUE	03.04.25	SC	DS	
REVISION	DETAILS	DATE	DRAWN	CHECKD	APPRO

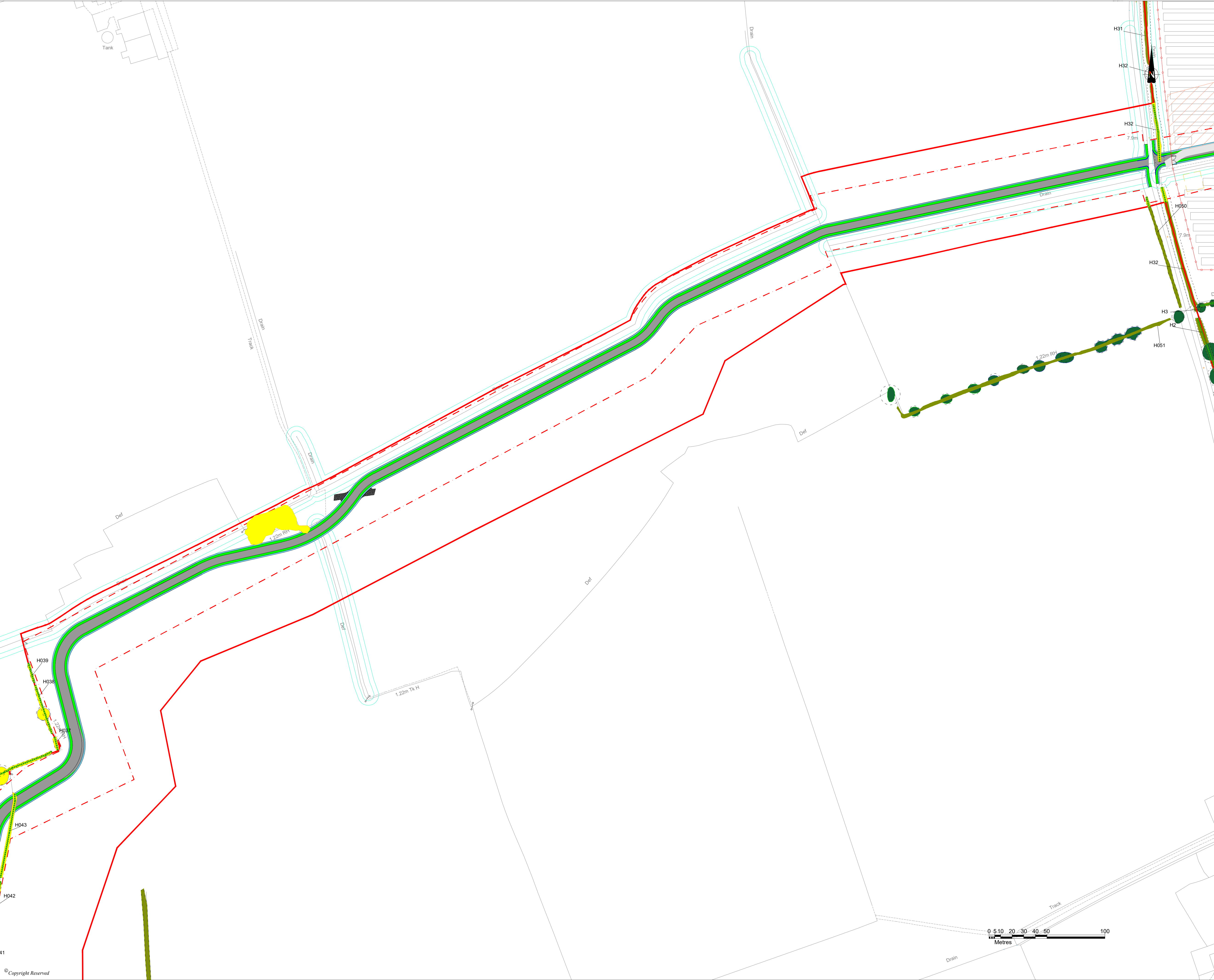
CLIENT
BEACON FEN ENERGY PARK LTD

PROJECT
BEACON FEN ENERGY PARK

DRAWING TITLE
FIGURE 6.32
VEGETATION REMOVAL PLAN
(BESPOKE ACCESS CORRIDOR)

DRG No.	ST19595-461	REV	3	SUIT. CODE	
DRG SIZE	A1	SCALE	1:70,000	DATE	03/04/2025
DRAWN BY	SC	CHECKED BY	DS	APPROVED BY	DS





DO NOT SCALE FROM THIS DRAWING

KEY

DCO Order Limits

Existing Trees / Vegetation

Existing Hedgerows to be retained and enhanced

Important Hedgerow

Existing Ponds / Waterbodies

Proposed Fence

Proposed Access Track

Root Protection Area

Existing Vegetation to be potentially removed

Existing Hedgerow to be removed (Energy Park)

Existing Scrub to be removed (Energy Park)

Existing Woodland to be removed (Energy Park)

Existing Tree Group to be removed (Energy Park)

Notes:

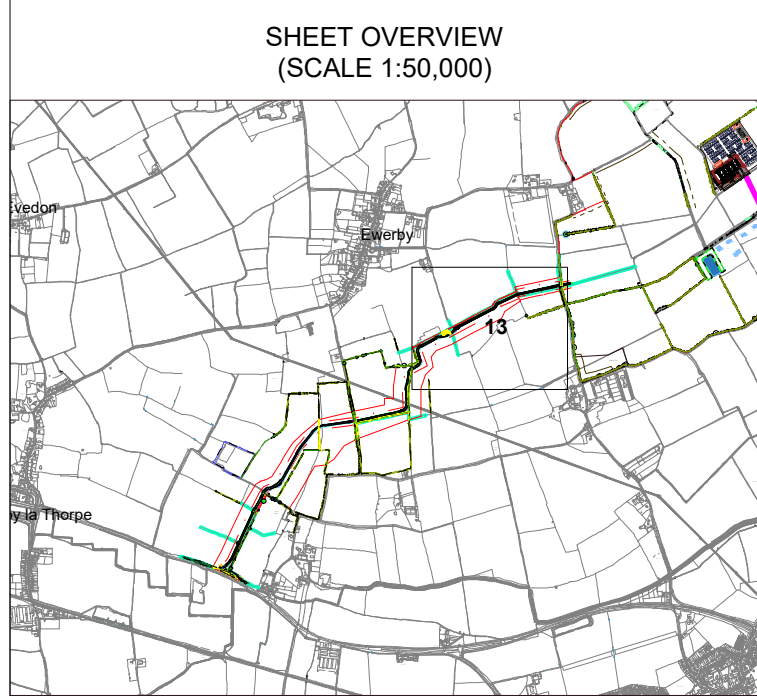
Vegetation removal within Bespoke Access Route and Cable Route Corridor shown on this plan is based on the current scheme design and alignment. Final details to be confirmed at detailed design stage.

Excluding the DCO order limits, boundaries shown are indicative.

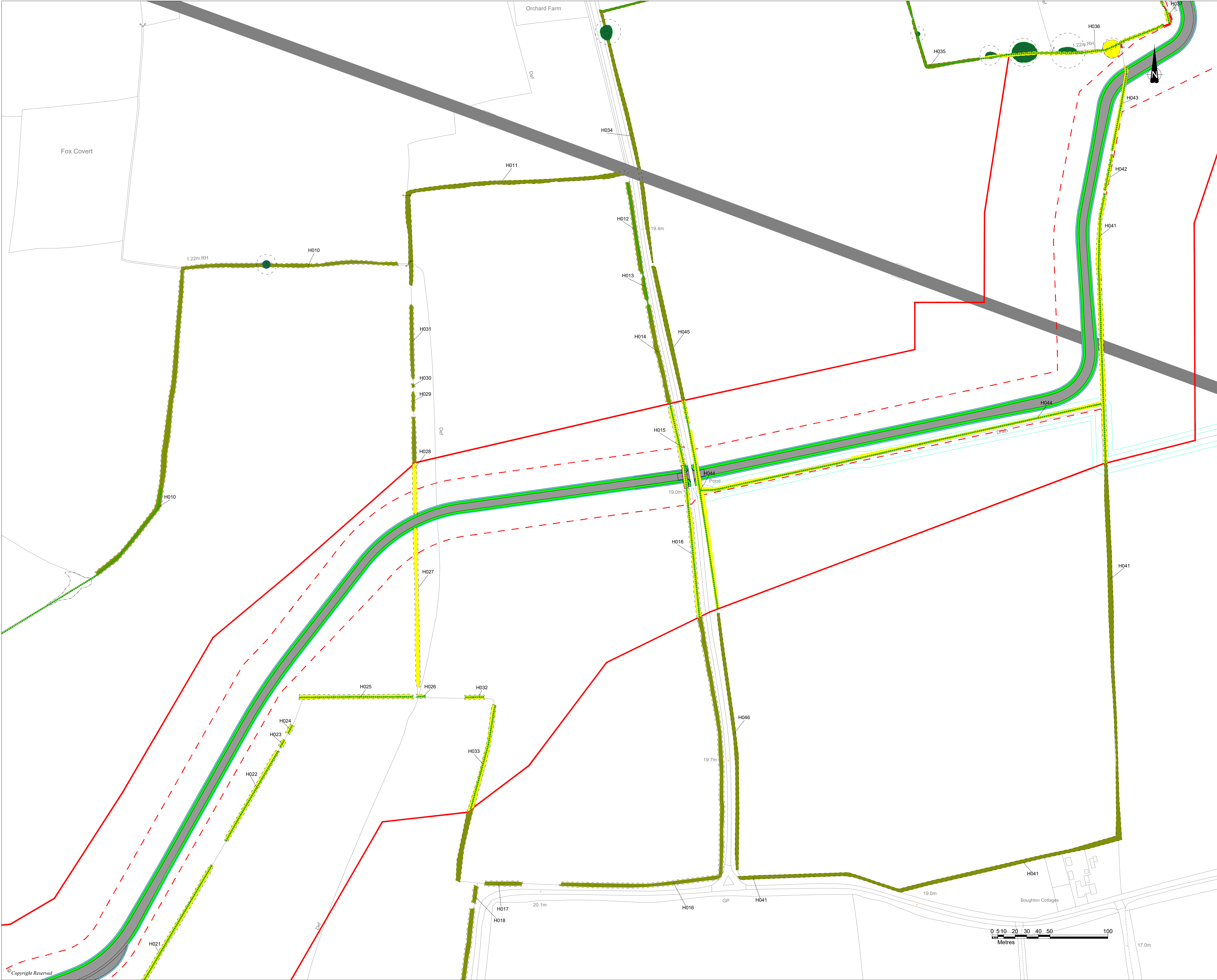
DCO order limits provided by Ardent Management on 04/02/2025.

Layout of Solar Panels taken from skyray drawing LCA-2023-01-BeaconFen_Works Plan B Rev B dated 25/02/25.

© Crown Copyright and database rights 2025 Ordnance Survey AC0000808122



3	QA Checks	16/10/25	SC	DS	DS
2	RETAINED VEGETATION AMENDMENT	07/10/25	SC	DS	DS
P1	FIRST ISSUE	03.04.25	SC	DS	
REVISION	DETAILS	DATE	DRAWN	CHECKED	APPROVED
CLIENT					
BEACON FEN ENERGY PARK LTD					
PROJECT					
BEACON FEN ENERGY PARK					
DRAWING TITLE					
FIGURE 6.32 VEGETATION REMOVAL PLAN (Sheet 13 OF 26)					
DRG No.	ST19595-461	REV	3	SUIT. CODE	
DRG SIZE	A1	SCALE	1:1,500	DATE	03/04/2025
DRAWN BY	SC	CHECKED BY	DS	APPROVED BY	DS
<div><div></div><div>wardell armstrong</div><div>PART OF SLR</div></div>				<div></div>	



DO NOT SCALE FROM THIS DRAWING

KEY

DCO Order Limits

Existing Trees / Vegetation

Existing Hedgerows to be retained and enhanced

Important Hedgerow

Existing Ponds / Waterbodies

Proposed Fence

Proposed Access Track

Root Protection Area

Existing Vegetation to be potentially removed

Existing Hedgerow to be removed (Energy Park)

Existing Scrub to be removed (Energy Park)

Existing Woodland to be removed (Energy Park)

Existing Tree Group to be removed (Energy Park)

Notes:

Vegetation removal within Bespoke Access Route and Cable Route Corridor shown on this plan is based on the current scheme design and alignment. Final details to be confirmed at detailed design stage.

Excluding the DCO order limits, boundaries shown are inticative.

DCO order limits provided by Ardent Management on 04/02/2025.

Layout of Solar Panels taken from skyray drawing LCA-2023-01-BeaconFen_Works Plan B Rev B dated 25/02/25.

© Crown Copyright and database rights 2025 Ordnance Survey AC0000808122

SHEET OVERVIEW
(SCALE 1:50,000)

3	QA Checks	16/10/25	SC	DS	DS
2	RETAINED VEGETATION AMENDMENT	07/10/25	SC	DS	DS
P1	FIRST ISSUE	03/04/25	SC	DS	
REVISION	DETAILS	DATE	DRAWN	CHECKED	APPROVED

CLIENT

BEACON FEN ENERGY PARK LTD

PROJECT

BEACON FEN ENERGY PARK

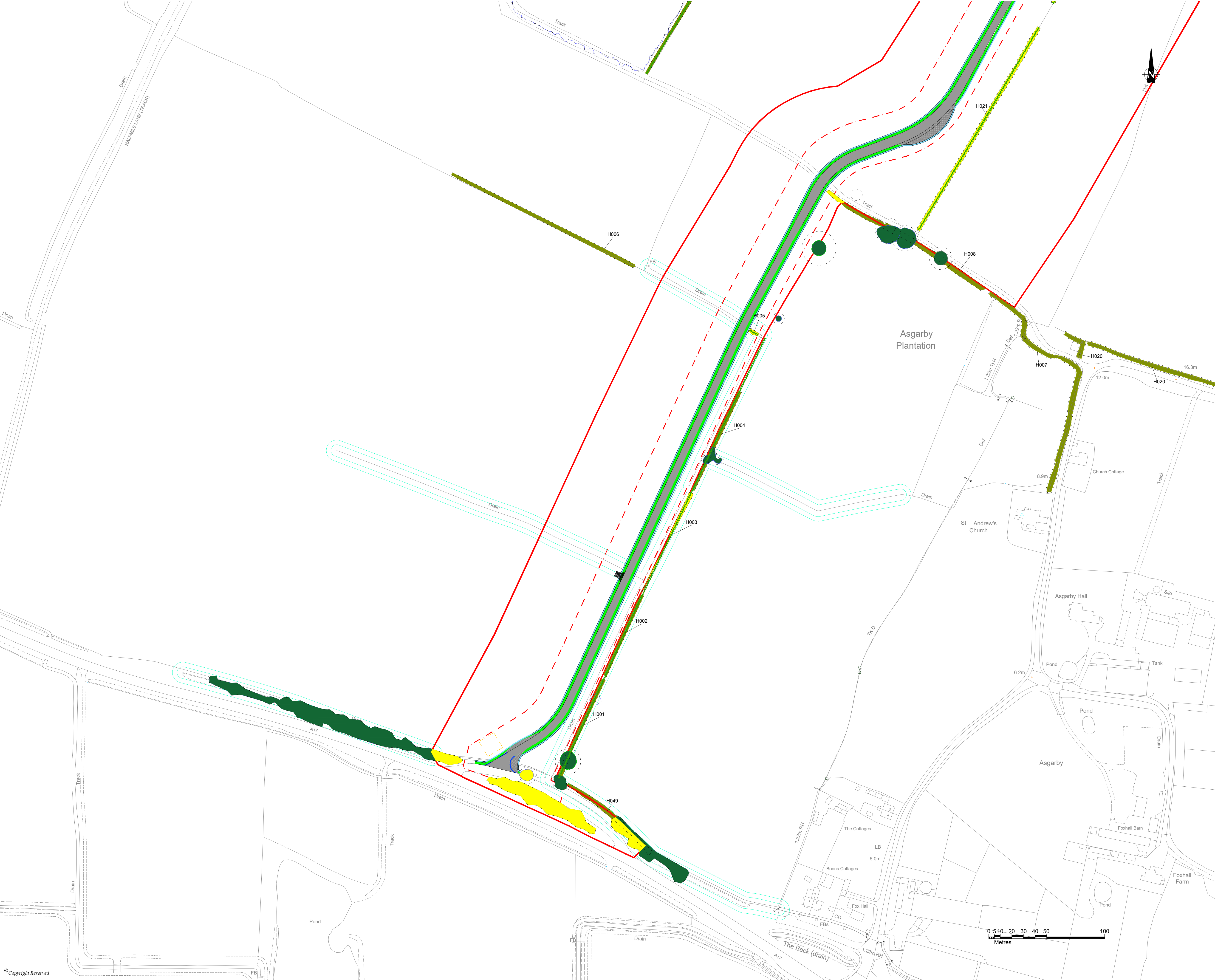
DRAWING TITLE

FIGURE 6.32
VEGETATION REMOVAL PLAN
(Sheet 14 OF 26)

DRG No.	ST19595-461	REV	3	SUIT. CODE	
DRG SIZE	A1	SCALE	1:1,500	DATE	03/04/2025
DRAWN BY	SC	CHECKED BY	DS	APPROVED BY	DS

PART OF SLR

N:\ST19595 - SOLAR PV\DCO BOOKER FEN03 - DESIGN\AUTOCAD\ST19595-461 VEGETATION REMOVAL PLAN (WP HATCH CHECK).DWG



DO NOT SCALE FROM THIS DRAWING

KEY

DCO Order Limits

Existing Trees / Vegetation

Existing Hedgerows to be retained and enhanced

Important Hedgerow

Existing Ponds / Waterbodies

Proposed Fence

Proposed Access Track

Root Protection Area

Existing Vegetation to be potentially removed

Existing Hedgerow to be removed (Energy Park)

Existing Scrub to be removed (Energy Park)

Existing Woodland to be removed (Energy Park)

Existing Tree Group to be removed (Energy Park)

Notes:




Vegetation removal within Bespoke Access Route and Cable Route Corridor shown on this plan is based on the current scheme design and alignment. Final details to be confirmed at detailed design stage.

Excluding the DCO order limits, boundaries shown are inticative.

DCO order limits provided by Ardent Management on 04/02/2025.

Layout of Solar Panels taken from skyray drawing LCA-2023-01-BeaconFen_Works Plan B Rev B dated 25/02/25.

© Crown Copyright and database rights 2025 Ordnance Survey AC0000808122

3	QA Checks	16/10/25	SC	DS	DS
2	RETAINED VEGETATION AMENDMENT	07/10/25	SC	DS	DS
P1	FIRST ISSUE	03.04.25	SC	DS	
REVISION	DETAILS	DATE	DRAWN	CHECKD	APPRO
CLIENT	BEACON FEN ENERGY PARK LTD				
PROJECT	BEACON FEN ENERGY PARK				
DRAWING TITLE	FIGURE 6.32 VEGETATION REMOVAL PLAN (Sheet 15 OF 26)				
DRG No.	ST19595-461	REV	3	SUIT. CODE	
DRG SIZE	A1	SCALE	1:1,500	DATE	03/04/2025
DRAWN BY	SC	CHECKED BY	DS	APPROVED BY	DS
					
PART OF					

© Copyright Reserved
N:\ST19595 - SOLAR PV DCO BICKER FEN03 - DESIGN\AUTOCAD\ST19595-461 VEGETATION REMOVAL PLAN (WP HATCH CHECK).DWG